

Outer Dowsing Offshore Wind

Environmental Statement

Chapter 15 Shipping and Navigation

Volume 2 Figures

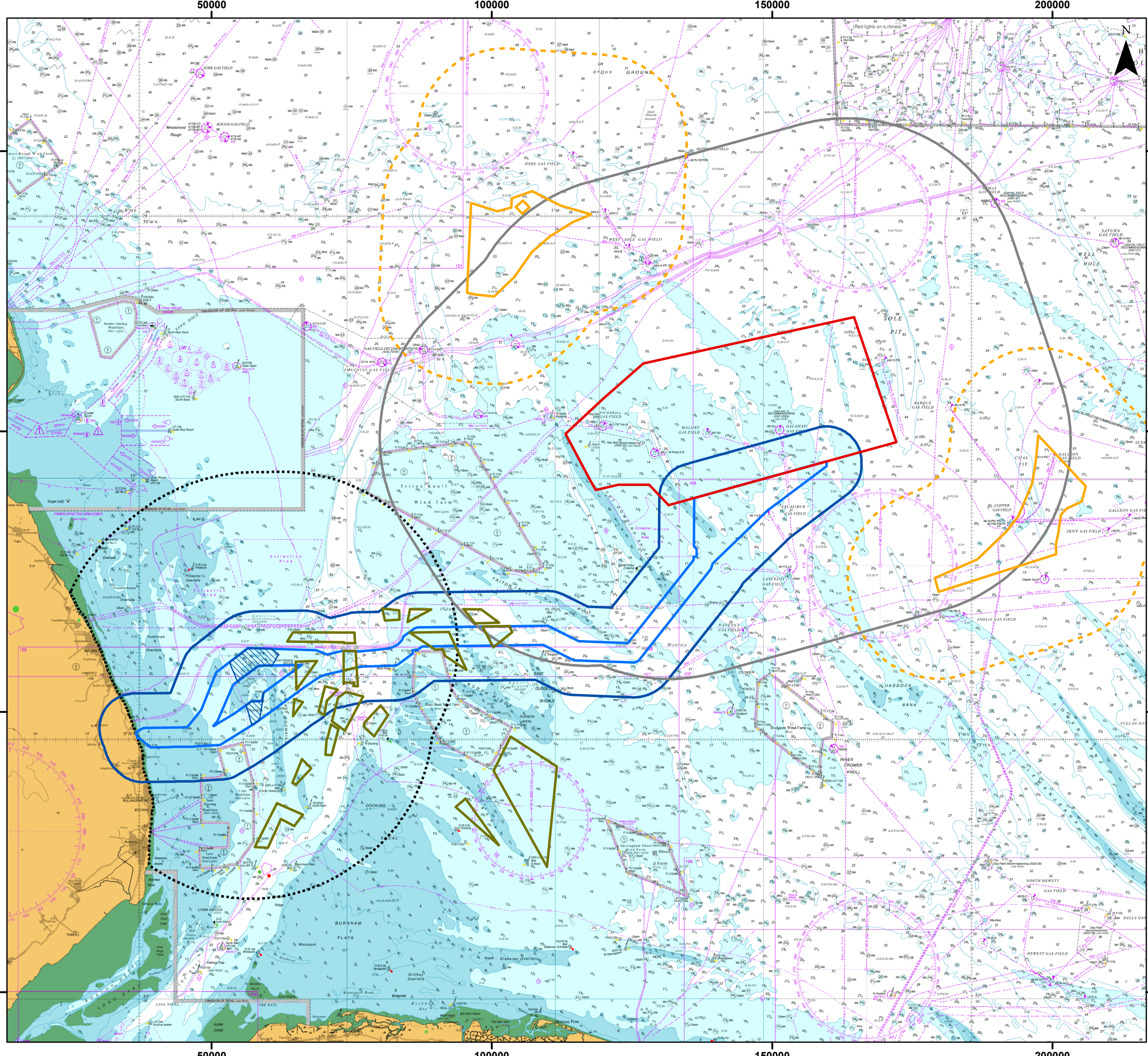
Date: March 2024

Document Reference: 6.2.15
Pursuant to APFP Regulation: 5(2)(a)
Rev: 1.0

Company:	Outer Dowsing Offshore Wind	Asset:	Whole Asset			
Project:	Whole Wind Farm	Sub Project/Package:	Whole Asset			
Document Title or Description:	Chapter 15 Shipping and Navigation Figures					
Internal Document Number:	PP1-ODOW-DEV-CS-FIG-0015	3 rd Party Doc No (if applicable):	N/A			
Outer Dowsing Offshore Wind accepts no liability for the accuracy or completeness of the information in this document nor for any loss or damage arising from the use of such information.						
Rev No.	Date	Status / Reason for Issue	Author	Checked by	Reviewed by	Approved by
Rev 1.0	March 2024	DCO Application	GoBe	GoBe	Shepherd and Wedderburn	ODOW

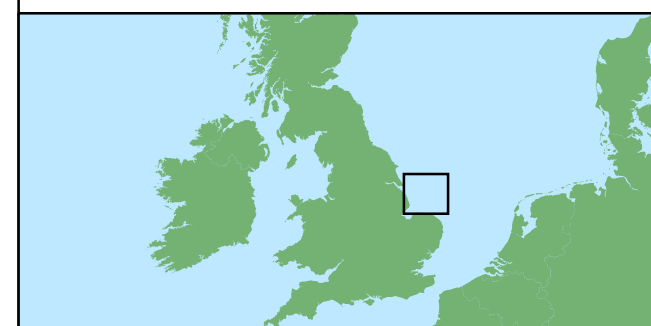
Table of Figures

- Figure 15.1 Study Areas (Document Reference: 6.2.15.1)
- Figure 15.2 Navigational Features (Document Reference: 6.2.15.2)
- Figure 15.3 AIS Summer (Document Reference: 6.2.15.3)
- Figure 15.4 AIS Winter (Document Reference: 6.2.15.4)




Legend

- Array Area
- Shipping and Navigation Study Area
- Offshore Export Cable Corridor
- Offshore ECC Study Area
- ORCP Area
- ORCP Area Study Area
- ANS Area
- ANS Area Minimum 5nm Buffer
- Biogenic Reef Restoration Search Area




Coordinate System: WGS 1984 World Mercator
 0 10 20 km
 Scale: 1:650,000
 A3 Page Size

Environmental Statement
 Study Areas for Shipping and Navigation
 Figure 15.1




OUTER DOWSING
OFFSHORE WIND



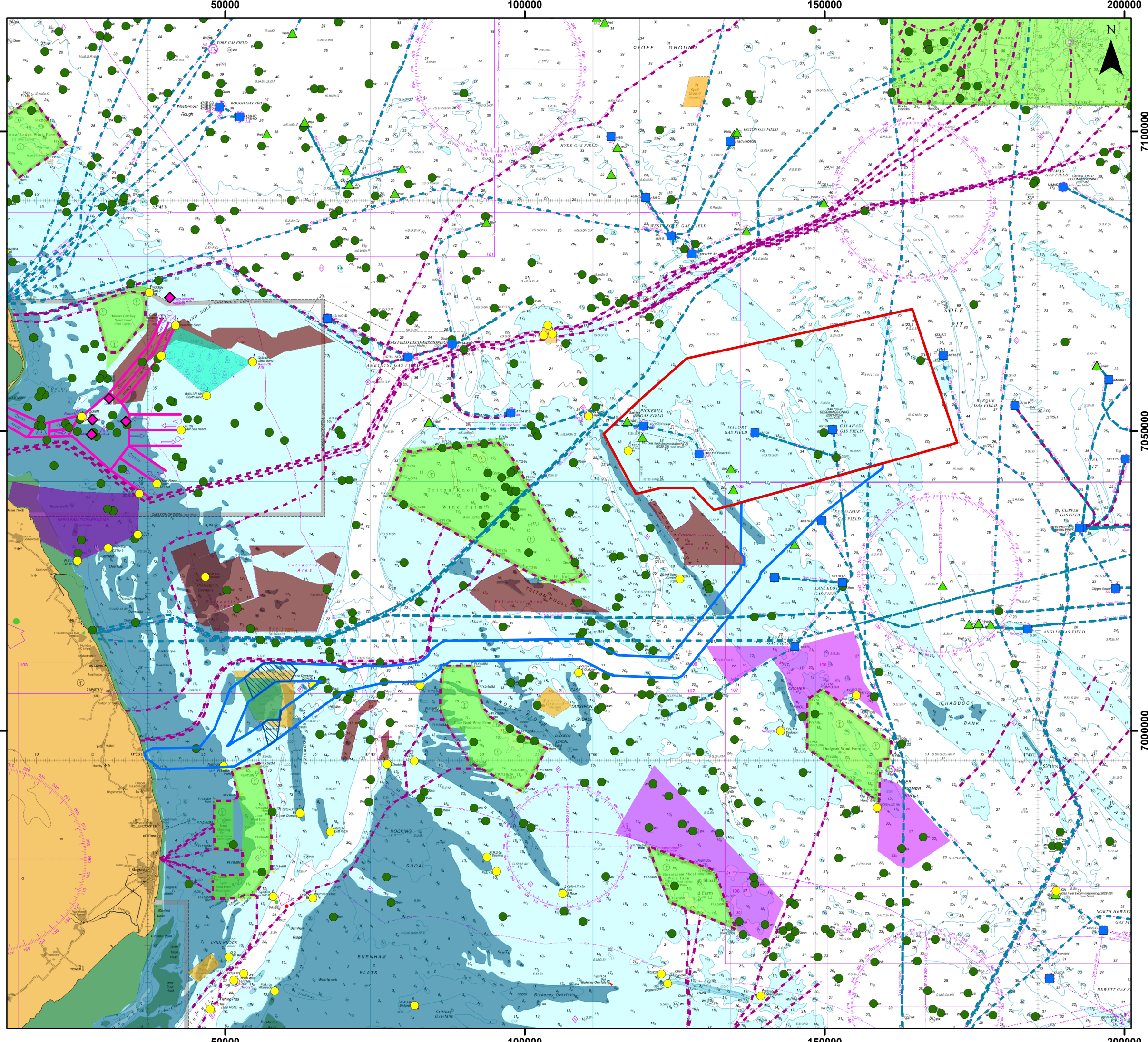
anatec

Date: 13/03/2024
 Produced By: DS
 Revision: 0.1



Gobe

Data Sources: © Crown Copyright and/or database rights. Reproduced by permission of The Keeper of Public Records and the UK Hydrographic Office (www.GOV.UK/HO)



Legend

- Array Area
- Offshore Export Cable Corridor
- ORCP Area

Navigational Features

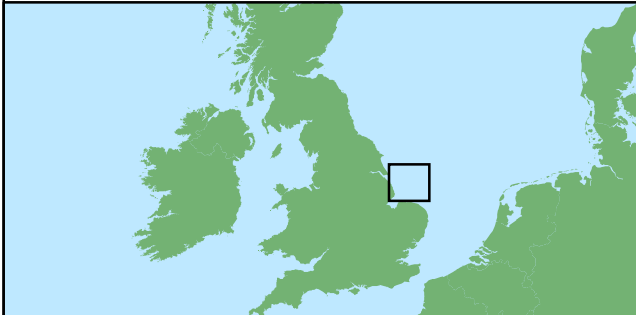
- Aid to Navigation
- ◆ Pilot Boarding Station
- Platform
- ▲ Well
- Reactive Compensation Station
- Wreck or Obstruction
- IMO Routing Measure
- Charted Anchorage
- PEXA
- Spoil Ground
- 10nm Contour
- Subsea Cable
- Subsea Pipeline

TCE Aggregate Dredging Area

- Exploration and Option Area
- Production Agreement Area

Other Offshore Wind Farm

- Active/In Operation
- In Planning



Coordinate System: WGS 1984 World Mercator

0 10 20 km

Scale: 1:600,000

A3 Page Size

Environmental Statement

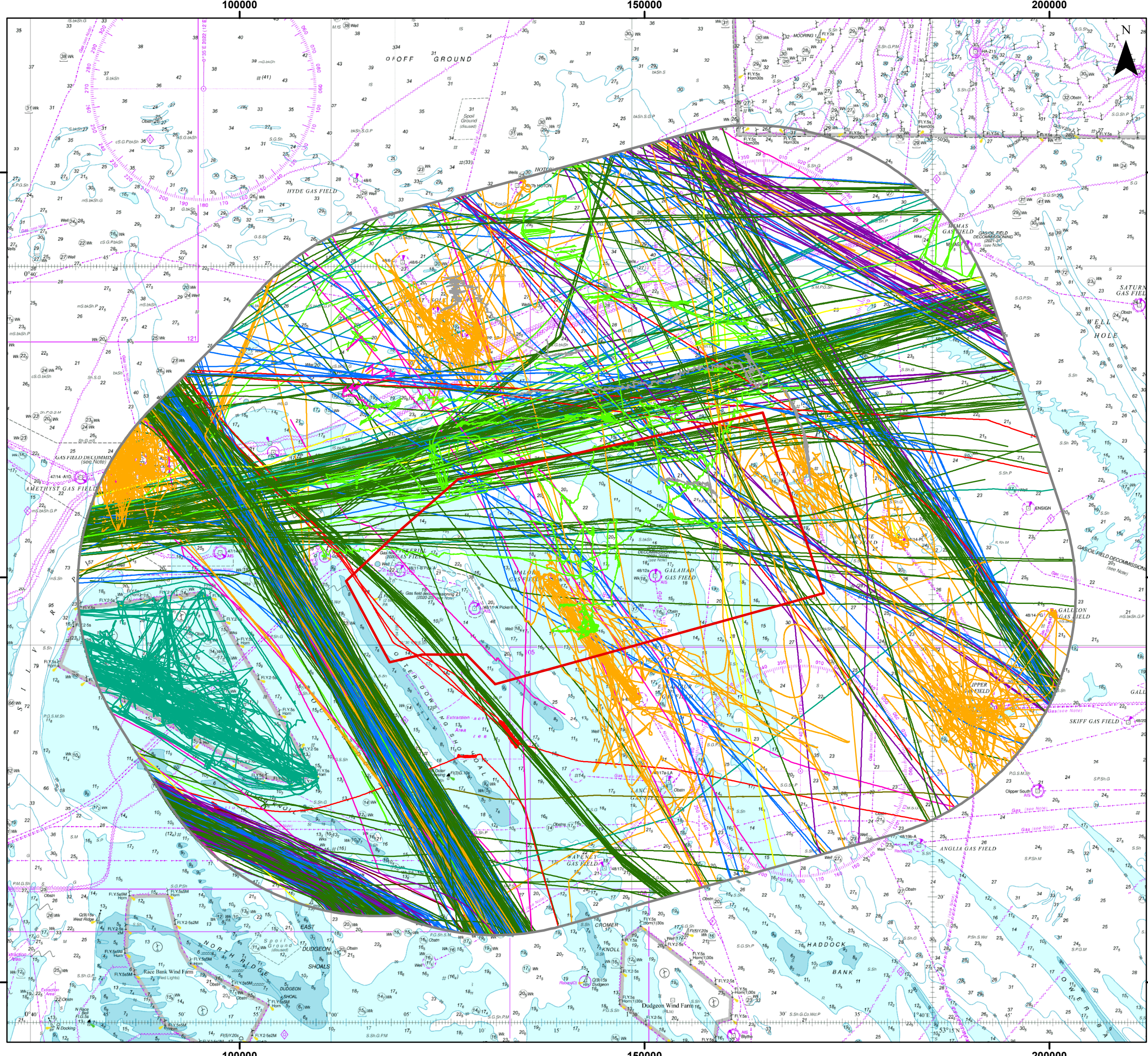
Overview of Navigational Features Relevant to the Project

Figure 15.2



Date: 21/02/2024
 Produced By: DS
 Revision: 0.1

Gobe Data Sources: © Crown Copyright and/or database rights. Reproduced by permission of The Keeper of Public Records and the UK Hydrographic Office (www.GOV.UK/HO)

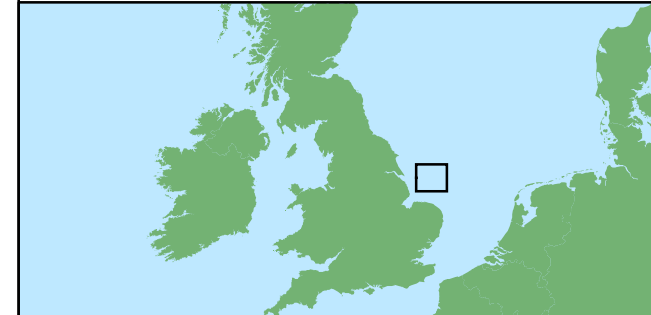


Legend

- Array Area
- Shipping and Navigation Study Area

Vessel Type

- Unspecified
- Fishing
- Military
- Dredger/Underwater Ops
- Tug
- Passenger
- Cargo
- Tanker
- Other
- Recreational
- Oil and Gas
- Wind Farm



Coordinate System: WGS 1984 World Mercator

0 10 20 km

Scale: 1:450,000

A3 Page Size

Environmental Statement

Vessel Traffic Survey Data by Vessel Type
(14 Days, Summer 2022)

Figure 15.3



OUTER DOWSING
OFFSHORE WIND

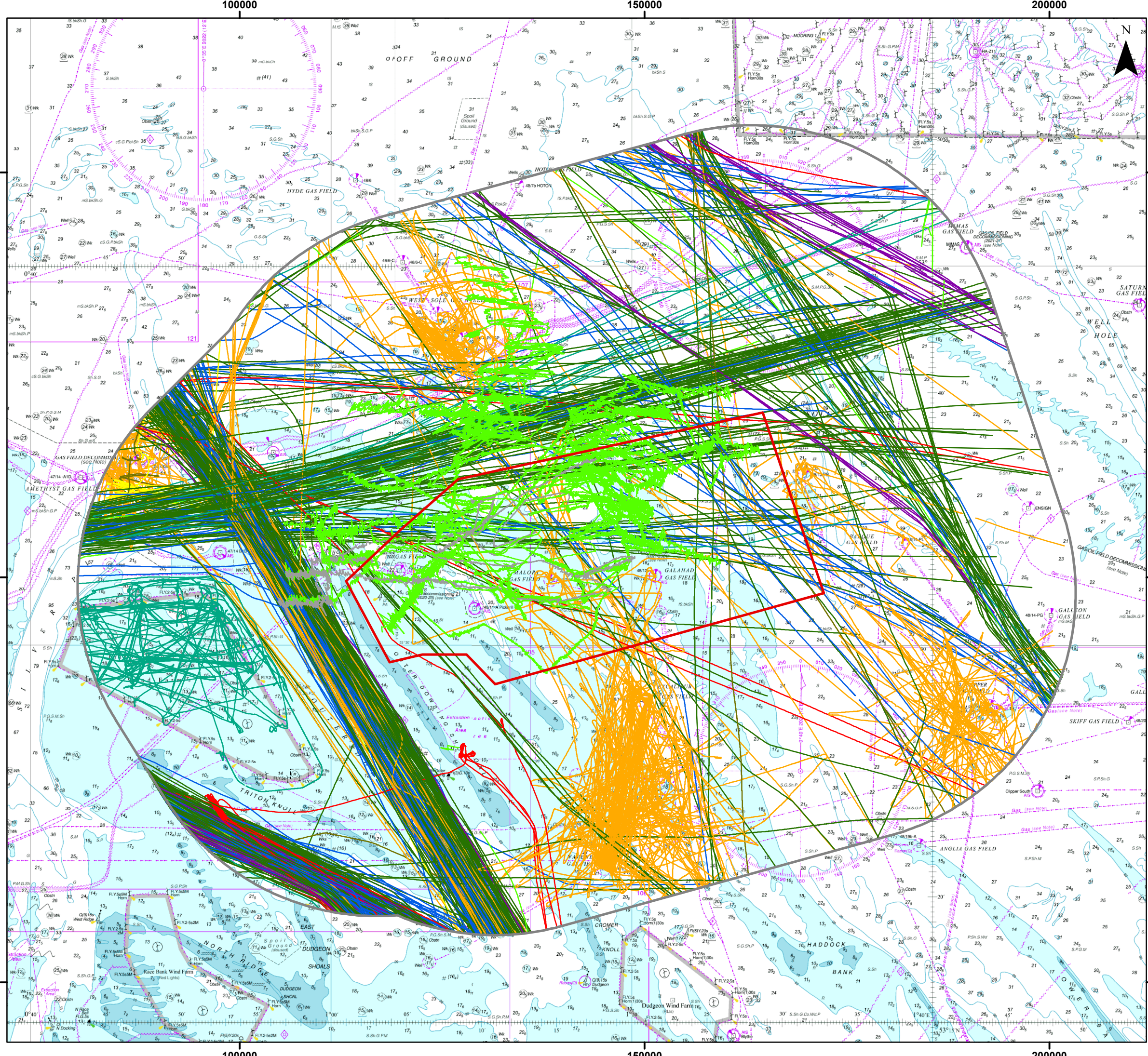


anatec

Date: 21/02/2024
Produced By: DS
Revision: 0.1



Data Sources: © Crown Copyright and/or database rights. Reproduced by permission of The Keeper of Public Records and the UK Hydrographic Office (www.GOV.UK/UHO)



Legend

- Array Area
- Shipping and Navigation Study Area

Vessel Type

- Unspecified
- Fishing
- Dredger/Underwater Ops
- Tug
- Passenger
- Cargo
- Tanker
- Other
- Oil and Gas
- Wind Farm



Coordinate System: WGS 1984 World Mercator

0 10 20 km

Scale: 1:450,000 A3 Page Size

Environmental Statement

Vessel Traffic Survey Data by Vessel Type
(14 Days, Winter 2022)

Figure 15.4



OUTER DOWSING
OFFSHORE WIND



anatec

Date: 21/02/2024
Produced By: DS
Revision: 0.1



GoBe

Data Sources: © Crown Copyright and/or database rights. Reproduced by permission of The Keeper of Public Records and the UK Hydrographic Office (www.GOV.UK/UHO)